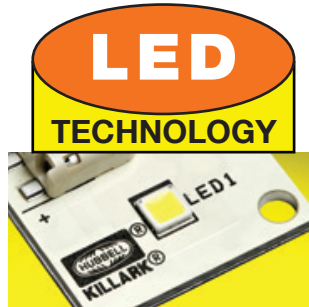


LIGHTING

EML SERIES



EXPLOSION-PROOF – INTRODUCTION & LOGIC



Expanded wattage range RANGE
40W, 45W, and 50W

Class I, Div. 1 & 2, Groups C,D
Class I, Zones 1 & 2, Groups IIB, IIA
Class II, Div. 1 & 2, Groups E,F,G
Class III, Div. 1 & 2
Suitable for wet locations
Suitable for Paint Spray Booth
Marine Rated (US only)
NEMA 3, 4, 4X
Factory Sealed

Certified - File LR11713

HOSTILE^{LITE} LED

FEATURES-SPECIFICATIONS

Applications

HostileLite® EML LED Series fixtures are designed for installations where moisture, dirt, dust, corrosion and vibration may be present, or NEMA 3 and 4X areas where wind, water, snow or high ambients can be expected. They can be used in locations made hazardous due to the presence of flammable or explosive gases, vapors and combustible dusts as defined by the NEC.

Applications include classified areas such as paint manufacturing plants, ammunition facilities, oil and gas producing and refining plants, off-shore and dockside installations, tank farms, pipeline pumping stations and marine loading and fuel transfer terminals.

Compliances

- UL-8750 for LED lighting
- UL-844 Electric Lighting Fixtures for use in Hazardous Locations
- UL Marine Type Electric Lighting Fixtures
- CSA C22.2 no. 137-M1981 Electric Luminaires for use in Hazardous Locations
- NEMA 3, 4, 4X, 7CD, 9EFG

Materials

- Ballast tank, splice box and guards corrosion resistant copper-free aluminum alloy
- Baked powder epoxy/polyester finish, electrostatically applied for complete, uniform corrosion protection
- All external hardware – Stainless Steel
- Reflectors are aluminum with white finish

LED Luminaire Features and Standards

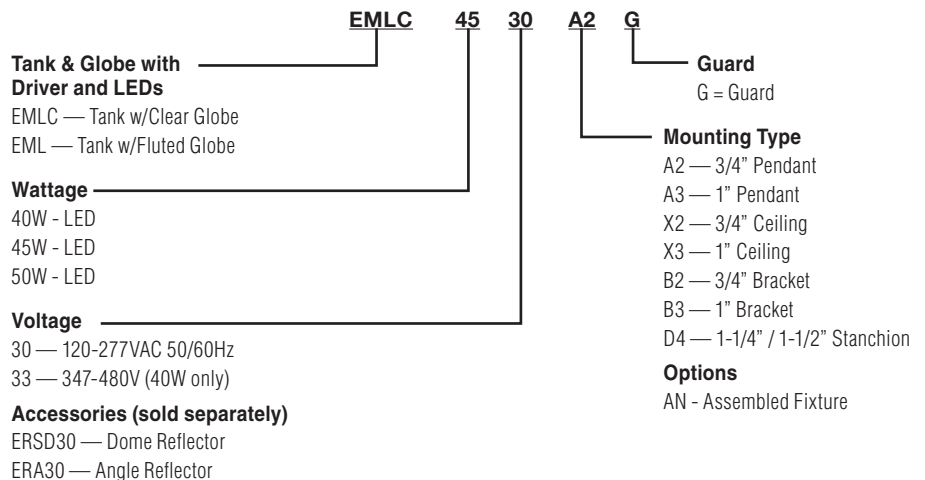
- Compact Explosion-proof with Traditional Industrial Appearance and Suitability
- Fluted or Exclusive Clear Globe; Dome or Angle Reflectors
- Surge Protection Standard
- Optional Mounting arrangements including Pendant, Wall, Ceiling, and Stanchion
- EML LED Housings can be retrofitted to existing EZ splice boxes; upgrade from Incandescent, Fluorescent or HID
- Energy Savings – Less than 55 Watts of Power
- Long Life – 50,000 - 55,000 Maintenance Free Hours to 70% Initial Lumens
- Crisp White Light for Excellent Color Rendering – Chromaticity 5000K (CCT range; approx. 70 CRI
- Ambient suitability -40°C to 55°C

- Instant on – Including after power interruption
- “World Voltage” 120-277VAC 50/60Hz
- Solder-LESS LED Board Connections – Vibration Resistant
- Dual Drivers – Redundant Systems (built-in backup)
- LM80-08* Measurement of lumen maintenance for LED light sources
- LM79-08* Certified “Absolute” Photometry, including Chromaticity Color for Solid State Lighting
- L70 Values – Industry Nomenclature for Hours of use to 70% of Initial Lumens
- Factory Sealed Construction – No external seal required, simply wire mounting cap and thread-in fixture to install

Suitable for Paint Spray Booth Applications

* LM-xx are Illumination Engineering Society Standards designed to promote uniformity in testing procedures among test labs and manufacturers. For more information go to www.ies.org

Catalog Number Logic





EXPLOSION-PROOF – ORDERING INFORMATION



Pendant



Ceiling



Wall



Stanchion

ORDERING INFORMATION

EML SERIES PENDANT WITH OPTIC AND GUARD ①

WATTS	HUB SIZE②	VOLTAGE④	FLUTED GLOBE & GUARD	CLEAR GLOBE & GUARD*
40	3/4"	120-277VAC	EML4030A2G	EMLC4030A2G
45	3/4"	120-277VAC	EML4530A2G	EMLC4530A2G
50	3/4"	120-277VAC	EML5030A2G	EMLC5030A2G

EML SERIES CEILING WITH OPTIC AND GUARD ①

WATTS	HUB SIZE②	VOLTAGE④	FLUTED GLOBE & GUARD	CLEAR GLOBE & GUARD*
40	3/4"	120-277VAC	EML4030X2G	EMLC4030X2G
45	3/4"	120-277VAC	EML4530X2G	EMLC4530X2G
50	3/4"	120-277VAC	EML5030X2G	EMLC5030X2G

EML SERIES WALL WITH OPTIC AND GUARD ①

WATTS	HUB SIZE②	VOLTAGE④	FLUTED GLOBE & GUARD	CLEAR GLOBE & GUARD*
40	3/4"	120-277VAC	EML4030B2G	EMLC4030B2G
45	3/4"	120-277VAC	EML4530B2G	EMLC4530B2G
50	3/4"	120-277VAC	EML5030B2G	EMLC5030B2G

EML SERIES 25° STANCHION WITH OPTIC AND GUARD ①

WATTS	HUB SIZE③	VOLTAGE④	FLUTED GLOBE & GUARD	CLEAR GLOBE & GUARD*
40	1-1/4"/1-1/2"	120-277VAC	EML4030D4G	EMLC4030D4G
45	1-1/4"/1-1/2"	120-277VAC	EML4530D4G	EMLC4530D4G
50	1-1/4"/1-1/2"	120-277VAC	EML5030D4G	EMLC5030D4G

① Catalog numbers shown are with Guard; Omit G if guard not required e.g. EML4530A2.

② Catalog numbers shown are with 3/4" conduit openings; change "2" to "3" for 1" e.g. EML4530A3G.

③ Stanchion conduit hub size supplied is 1-1/2" with 1-1/2" to 1-1/4" reducer for 1-1/4" mounting (refer to catalog logic).

④ 120VAC through 277VAC 50/60Hz.

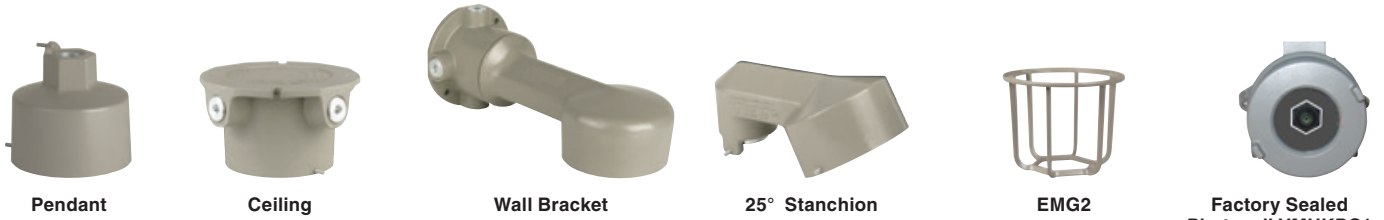
* Exclusive from KILLARK - clear globe for maximum brightness.

LIGHTING

EML SERIES



EXPLOSION-PROOF – COMPONENTS & RATINGS



EZ MOUNTING BRACKETS				
CATALOG NUMBER				HUB SIZE
PENDANT	CEILING	WALL	STANCHION	
EZA2	EZX2	EZB2	—	3/4"
EZA3	EZX3	EZB3	—	1"
—	—	—	EZD4*	1-1/4" / 1-1/2"*

* 1-1/2" furnished with 1-1/2" - 1-1/4" reducer

EML - EMLC LED ACCESSORIES	
DESCRIPTION	CATALOG NUMBER
Guard ^①	EMG2
Dome Reflector ^②	ERSD30
Angle Reflector ^②	ERA30
CIDI C2D1 N4X Photocell 120VAC	VMHKPC1
CIDI C2D1 N4X Photocell 208-277VAC	VMHKPC2
Replacement Fluted Globe & Support	EMGS3
Replacement Clear Globe & Support	EMGS2
Adapter to old Killark "H" Series or Crouse Hinds [®]	EAC/EACH ^③

- ① Guards are cast of copper-free aluminum with electrostatically applied epoxy/polyester.
- ② Reflectors are aluminum with white finish.
- ③ Adapters for discontinued Killark "H" Series and Crouse Hinds[®] available. See page L223 for more information.

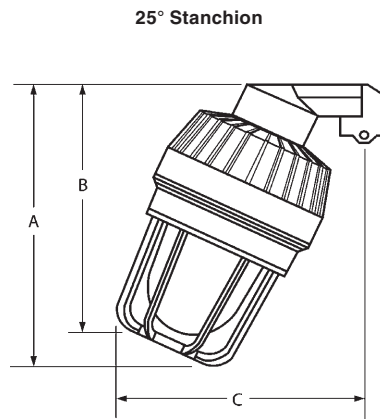
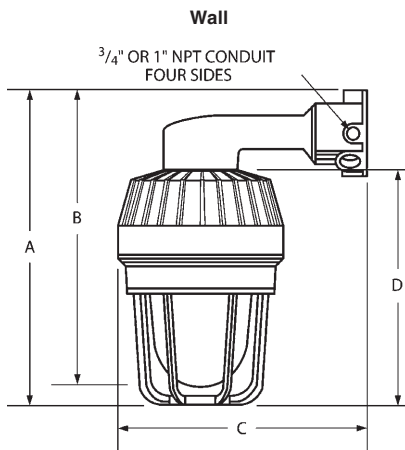
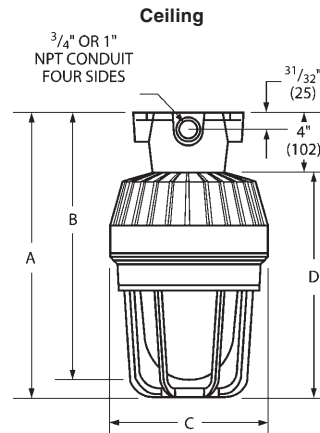
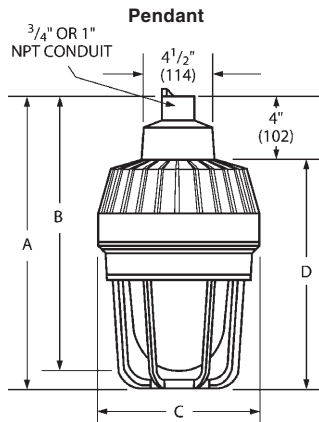
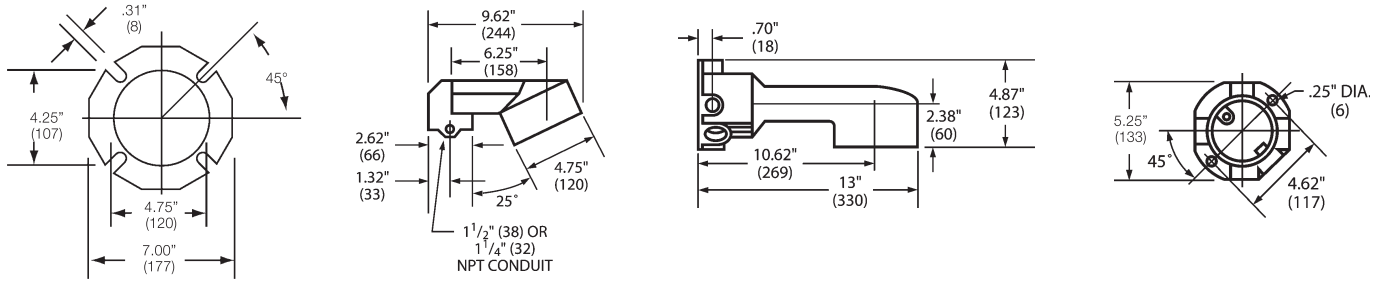


ORDERING INFORMATION AND AMBIENT SUITABILITY							C1D1/C1Z1		C2D1		L70	
CATALOG NO.	WEIGHT LBS./KG	WATTS	VOLTAGE	AMPS	EML FLUTTED LUMENS	EMLC CLEAR LUMENS	40°C	55°C	40°C	55°C	TM-21	CALCULATED
EML4030	26.00 / 11.79	40	120-277VAC	0.46-0.16	3479	3750	T6	T6	T4A (EFG)	T4 (EFG)	60100	270000
EML4033			347-480VAC	0.14-0.10								
EML4530		49	120-277VAC	0.41-0.18	2880	2930						
EML5030		50	120-277VAC	0.43-0.18	5740	5741						

③ TM-21 based values require very long duration testing. The TM-21/L70 "official reported" value is based on at least 10,000 hours testing (at time of printing) at 1000mA to 1500mA drive current, depending on LED chip utilized. "Reported L70" is a factor of test duration. KILLARK's VM4LC/B series utilizes lower 700mA maximum drive current - "calculated" values by the major chip vendors utilized predict L70 life up to 278,000 hours even at 1000mA.



EXPLOSION-PROOF – DIMENSIONS & WEIGHTS



EML(C) DIMENSIONS				
TYPE	A	B	C	D
PENDANT	15-15/16" (404)	15-1/16" (382)	8-13/16" (224)	11-15/16" (303)
CEILING	15-15/16" (404)	15-1/16" (382)	8-13/16" (224)	11-15/16" (303)
WALL	16-13/16" (426)	15-15/16" (404)	15" (379)	11-15/16" (303)
STANCHION	15-1/8" (384)	14" (356)	13-1/2" (343)	

TYPICAL WEIGHTS (LBS.) W/STANDARD GLOBE AND GUARD - EML (C) SERIES			
Pendant 29.33	Ceiling 31.79	Wall 33.25	Stanchion 30.94